



CHÂTEAU BOUFFÉMONT

*A refined venue for
your corporate events*

The Château Bouffémont



A peaceful haven erected in the nineteenth century, the Château was the setting for prestigious ceremonies organized by former residents, the Marquise of Preignes and Baron Empain.

Following a full renovation by the new proprietor, the Château is now reserved to rent for exclusive use.

Designed to ensure first-class comfort, personalized service and refined furnishings, every detail reflects the spirit of the setting. With five grand reception halls, nine magical suites and a sumptuous garden and grounds, the Château is the ideal place to take an intimate vacation, organise an event or simply enjoy a special moment with your friends and family.

Just 30 kilometers from the center of Paris and 20 minutes from Charles de Gaulle Airport, the Château is located in the heart of Montmorency Forest. It offers a panoramic view of the Paris International Golf Club, an 18-hole course designed by golf legend Jack Nicklaus.

The Château estate covers five hectares of greenery, which is reserved for you alone and include gardens over three levels, an illustrious heritage of French classicism bordering a forest.



CHÂTEAU BOUFFÉMONT





Your Corporate Events at Château Bouffémont



May it be for a seminar, a team building session, or any other meeting, a company event, a press or public relations operation, a convention, an in-house or managerial communication action, the launching of a product, a fashion show, a photo or film shooting, Château Bouffémont is the ideal place to enjoy an enchanting and refined setting, equipped with all modern conveniences that the business world demands today, and a service adapted to your specific needs.

Organize your company's stay at Château Bouffémont, and you will take advantage of a sumptuous setting of five hectares of unrivalled heritage. You will have the exclusive use of our vast facilities, and of a full staff at your disposal so that you are free to concentrate on the job at hand.



CHÂTEAU BOUFFÉMONT





Venue & Accommodation Capacity



This noble, stone-built residence spread over four floors offers over 2000 square meters of living space. Refined furnishings accompanies the latest technology adapted for events and provides an exceptional setting for receptions.

Ground Level

With five-meter-high ceilings, the Grand Salon, the Salon du Baron and the Salon de la Marquise are the ideal place to host a seated or a cocktail dinner. All three are situated next to each other and can be combined as a whole as one function room.

Capacity

- 175 square meters
- Up to 150 guests for a seated dinner

The Grand Salon

With large windows towards the main terrace, overlooking the spectacular greenery of the gardens, the Grand Salon allows full appreciation and enjoyment of the surrounding serenity in an elegant setting under the breath-taking crystal chandeliers.

This imperial function room is without a doubt the heart of the prestigious ceremonies held at the historical château.

Capacity

- Dimensions: 12 meters x 5,5 meters
- 65 square meters
- 7 tables of 8-9 guests for up to 60 guests

The Salon du Baron

With reunited hand-made wooden panels, deep red silk wall-covering and a majestic marble chimney, this function room was once the preferred spot of Major General Baron Empain.

Capacity

- Dimensions: 10 meters x 5,5 meters
- 55 square meters
- 4 tables of 10 guests for up to 40 guest

The Salon de la Marquise

Inspired from the colors of Marquise de Preignes's one of favorite jewelry pieces, The Salon de la Marquise is adorned with shining amethyst crystal chandeliers; a place of refined décor, airy and fresh.

Capacity

- Dimensions: 10 meters x 5,5 meters
- 55 square meters
- 5 tables of 8-9 guests for up to 45 guests

The Terrace

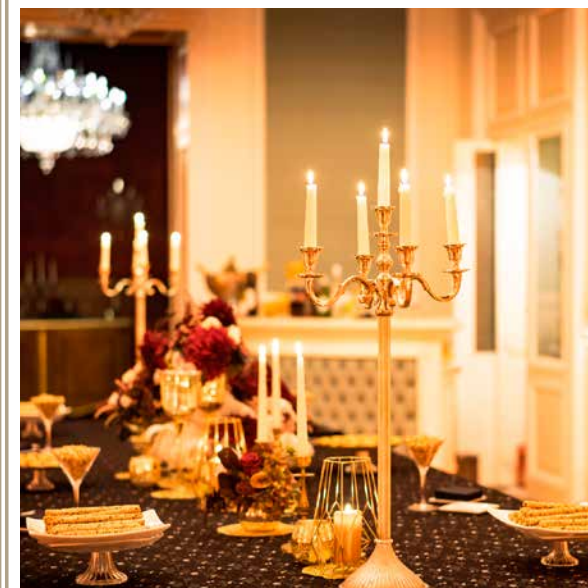
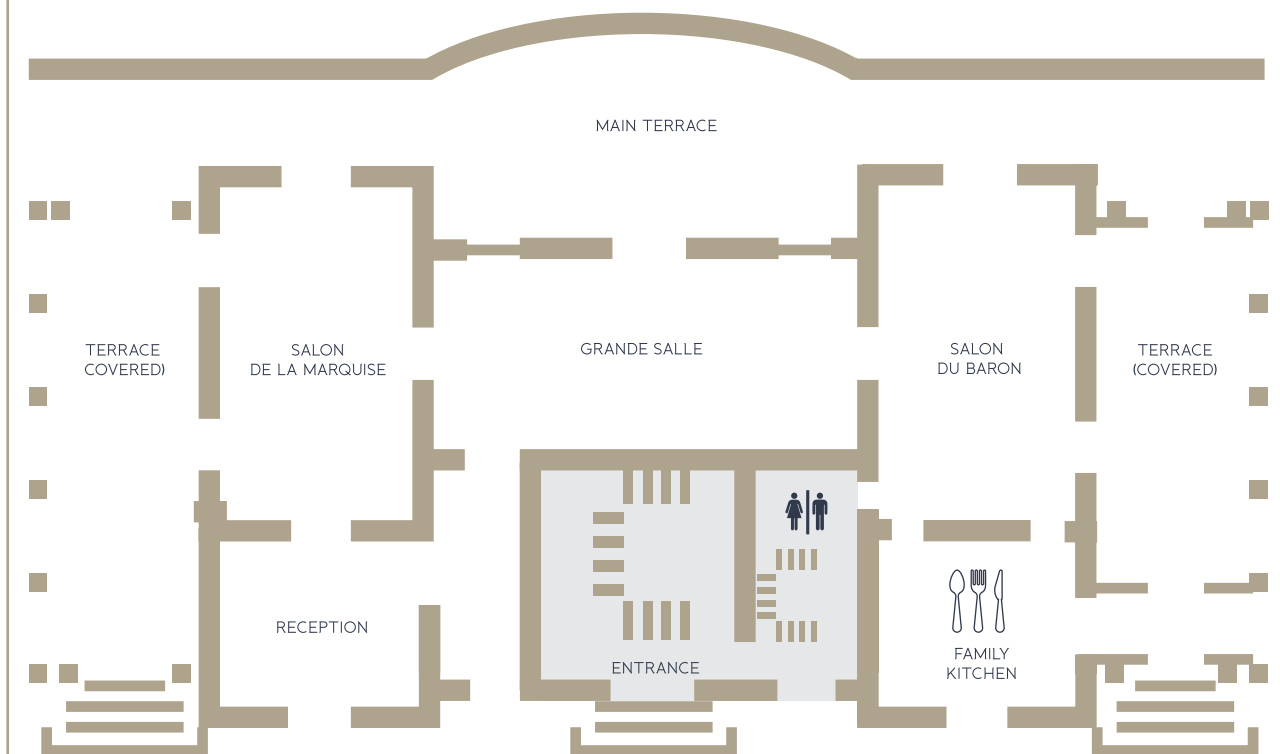
The masterpiece of this prestigious residence is certainly, the monumental and stunning staircase built in early 20th century by Baron Empain using architectural techniques ahead of his time. This part of the magnificent Château overlooks the panoramic view of the forest and provides an ideal spot for cocktails in the afternoon.

Capacity

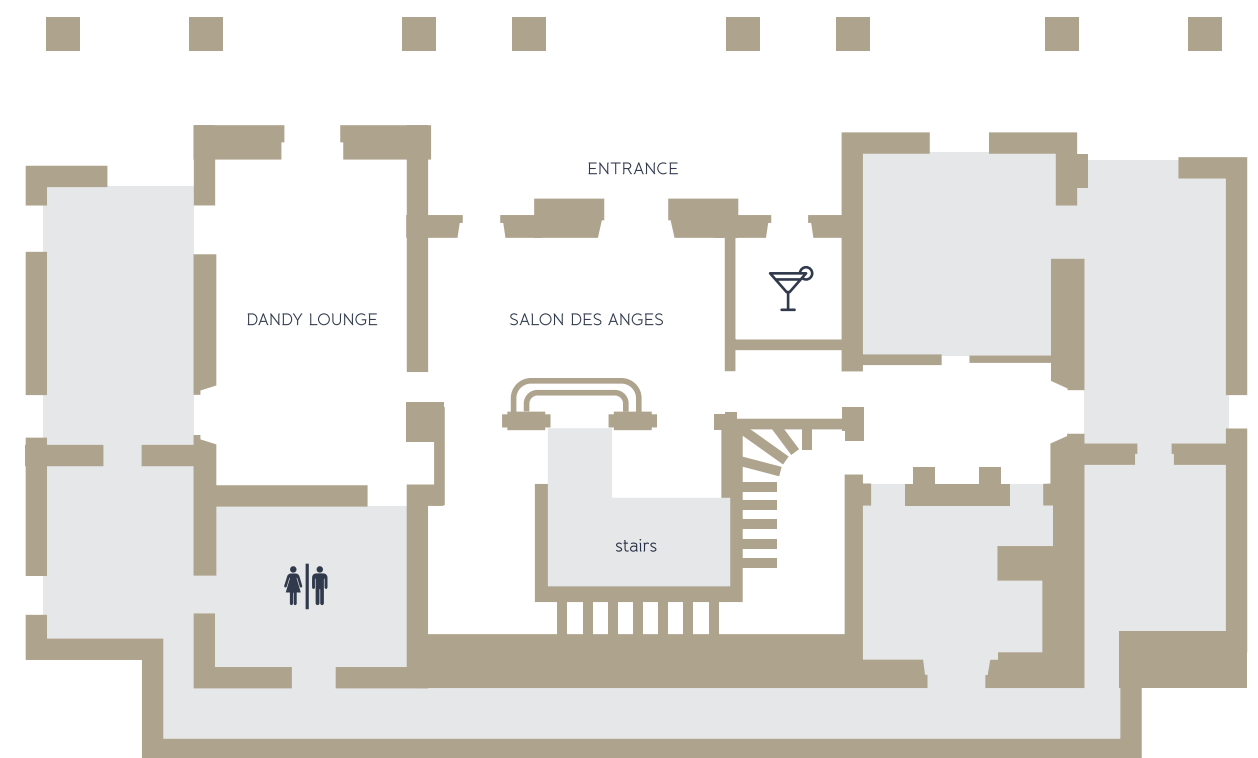
- Dimensions: 34 meters x 3-6 meters
- 180 square meters
- Up to 90 guests



CHÂTEAU BOUFFÉMONT



CHÂTEAU BOUFFÉMONT



Garden Level

Below the historical staircase, through the entrance guarded by two majestic sculptures installed by the renowned artist Jean-Baptiste Carpeaux whose works also decorate the façade of the Opera Garnier in Paris, the Garden Level is the perfect area for cocktail receptions and late-night partying.

- ◆ 120 square meters
- ◆ Up to 150 guests

The Salon des Angès

Decorated with an elegant wooden bar, the Salon des Angès is adorned with beautiful ornamental stone work on its walls and garnished with exquisite marble flooring. This room is the most adapted area for dancing and late-night partying.

The Dandy Lounge

Devoted to the Château's previous noble owners, the Dandy Lounge recalls the effervescence of the twenties and thirties: Chesterfield sofas, unfinished wooden furniture with industrial lines and avant-garde objects symbolize a modernist era. This lounge area just next to the Salon des Angès is the perfect option for the ones who prefer to sit back and enjoy the evening.



CHÂTEAU BOUFFÉMONT

Upper Levels

The nine prestigious suites and rooms of Château Bouffémont can hold up to 30 guests. To offer optimal comfort, all rooms feature the latest equipment: flat-screen television, radio, telephone, Internet and Wi-Fi.

First floor:

- Room 1: 45 m² Suite with an emperor size bed, 1 convertible sofa that can accommodate 2, bathroom with shower and bath tub, a private terrace with view of the Private Horse Club.
- Room 2: 38m² Room with two twin beds with 1 convertible sofa that can accommodate 1, bathroom with shower.
- Room 3: 34 m² Room with queen size bed, 1 convertible sofa that can accommodate 1, bathroom with shower.
- Room 4: 70 m² Master Suite with emperor size bed, 1 convertible sofa that can accommodate 2, bathroom with shower and bath tub, a fireplace, a private terrace with view on the forest.
- Room 5: 45 m2 Central Suite with an emperor size bed, 1 convertible sofa that can accommodate 2, bathroom with shower and bath tub, view of Chateau Gardens and the Golf Course.

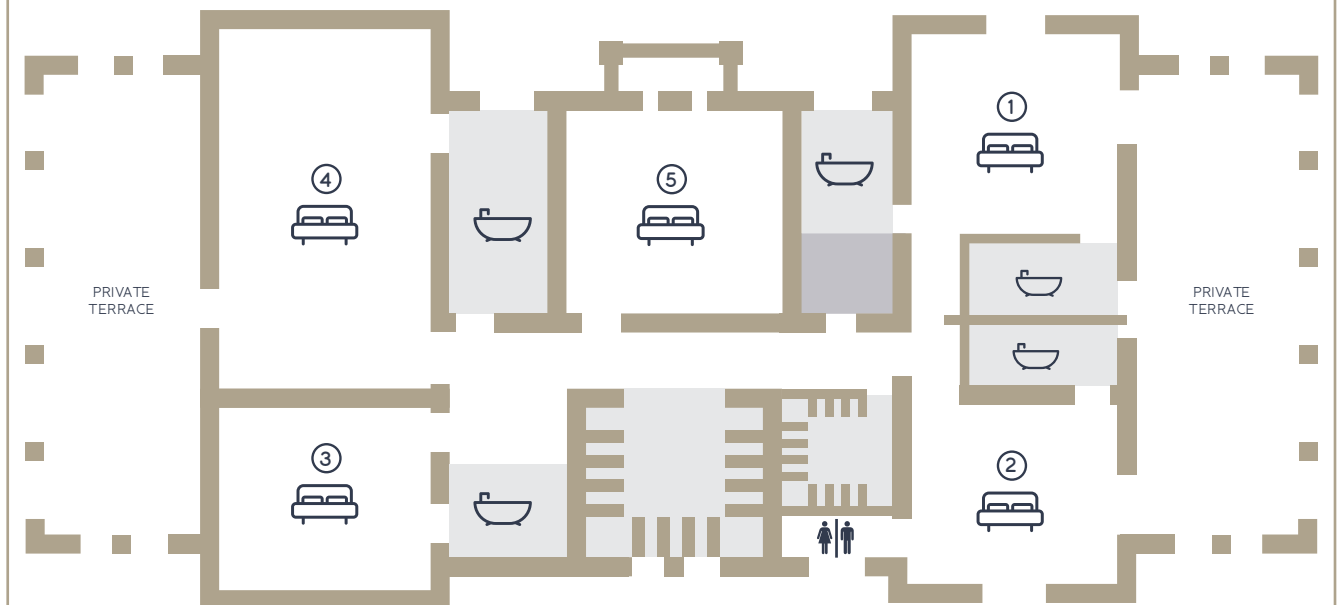
Second floor:

- Room 6: 34 m² Room with Twin beds with 1 convertible sofa that can accommodate 1, bathroom with shower.
- Room 7: 45 m² Suite with an emperor size bed, 1 convertible sofa that can accommodate 2, bathroom with shower and bath tub
- Room 8: 47 m² Suite with an emperor size bed, 1 convertible sofa that can accommodate 2, walk-in dressing room, bathroom with shower and bath tub
- Room 9: 45 m² Suite with an emperor size bed, 1 convertible sofa that can accommodate 2, bathroom with shower and bath tub

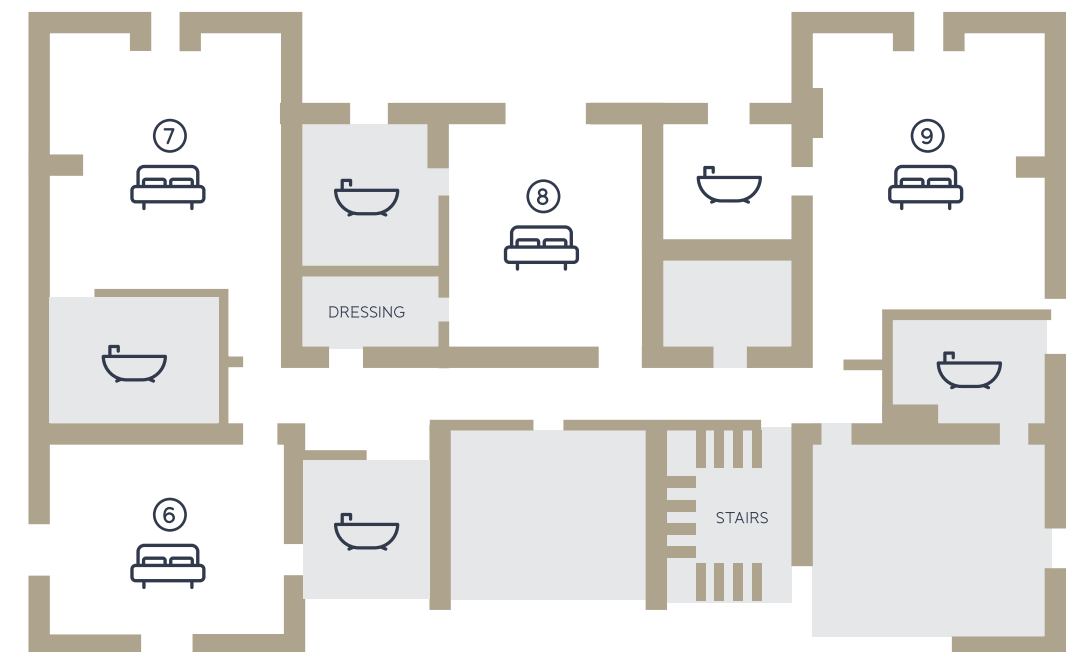


CHÂTEAU BOUFFÉMONT

First floor



Second floor



CHÂTEAU BOUFFÉMONT



External Accommodation



For additional accommodation for your guests, Château Bouffémont can recommend some other establishments in the region.

THE HOTELS

Novotel – Château de Maffliers
Allée des Marronniers, 95560 Maffliers
Contact : +33(0)1 34 08 35 35

Golf Hôtel de Mont Griffon
Route départementale 909, 95270 Luzarches
Contact : +33(0)1 34 68 10 10

Hôtel du Lac
89 Rue du Général de Gaulle, 95880 Enghien-les-Bains
Contact : +33(0)1 39 34 11 00

THE GUESTROOMS

Bateau Daphné
25 rue Marcel Martin Quai de l'île, 95430 Auvers-sur-Oise
Contact : +33(0)1 30 36 18 88

Le Clos des Fées
42 Bis Grande Rue, 95270 Asnières-sur-Oise
Contact : +33(0)9 52 59 83 65

La Sweet Home
95270 Asnières-sur-Oise
Contact : RELAIS DÉPARTEMENTAL DES GÎTES DE FRANCE EN VAL D'OISE +33(0)1 34 09 81 73

La Ferme Rose
Rue de la Ferme, 95000 Boisemont
Contact : +33(0)1 34 42 29 21

THE COTTAGES

Le Gîte de Léry
95430 Auvers-sur-Oise
Contact : RELAIS DÉPARTEMENTAL DES GÎTES DE FRANCE EN VAL D'OISE +33(0)1 34 09 81 73

Le Gîte du Valambourg
69 Rue Daubigny, 95430 Auvers-sur-Oise
Contact : RELAIS DÉPARTEMENTAL DES GÎTES DE FRANCE EN VAL D'OISE +33(0)1 34 09 81 73

Le Jad'OR
95270 Chaumontel
Contact : RELAIS DÉPARTEMENTAL DES GÎTES DE FRANCE EN VAL D'OISE +33(0)1 34 09 81 73



CHÂTEAU BOUFFÉMONT



Practical Information



MAP AND DIRECTIONS

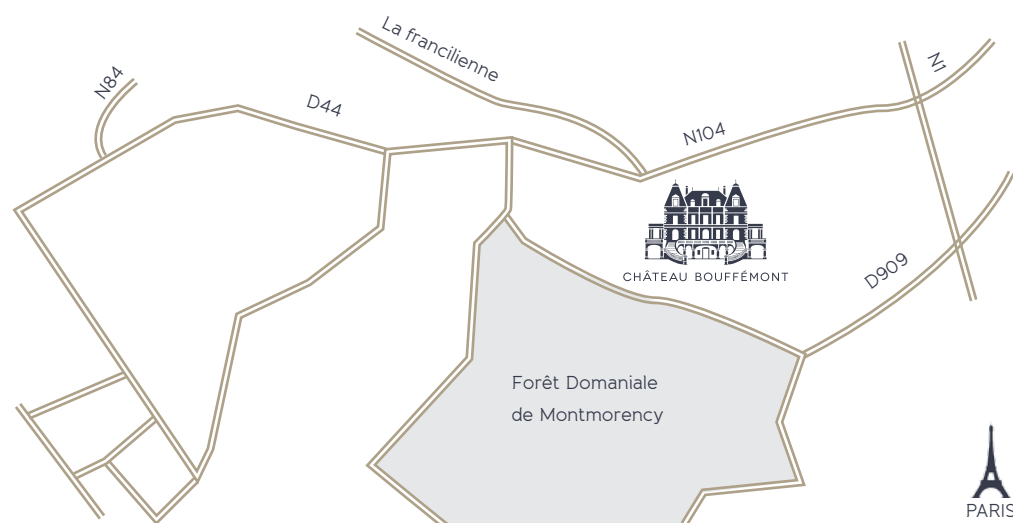


by car :
20 min. from Charles de Gaulle
airport, 35 min. from Paris.



by train :
Transilien H leaving from Paris
Gare du Nord (20-minute ride).

The Bouffémont-Moiselles station is located 2.5 km (1.5 miles) from the Château.
Shuttle service every 30 minutes.



We remain at your entire disposal for further information and please do not hesitate to contact us.
info@chateaubouffemont.com - +33 (0) 1 39 91 20 94 – www.chateaubouffemont.com



facebook.com/chateaubouffemont



#chateaubouffemont

instagram.com/chateaubouffemont



CHÂTEAU BOUFFÉMONT



